

100% SELECTIVE PALLET RACKS

HIGH DENSITY

Original Slotted

Tear Drop

Structural

Drive-In/Drive-Thru

Push-Back

Gravity Flow



Original Ridg-U-Rak Hook and Slot Design

Ridg-U-Rak's original slotted roll-formed columns with fully welded bracing sets the standard for rigidity, strength and durability. Ridg-U-Rak is available in a wide variety of sizes and load capacities.

Columns Sizes: 3x2-1/4, 3x3 and 4x3-inch
Beam Sizes: 2-1/2 thru 6-1/2 inch step beams

Connection Style: Hook and Slot with automatic lock

Features:

- Roll-formed columns with 180° return flanges
- 100% welded uprights
- Superior bracing design
- Large base plates
- Offset anchor holes
- 4" vertical adjustability



Industry Compatible Tear Drop Style Rack

Ridg-U-Rak's Tear Drop beam-to-column connection is designed to be compatible with other widely available Tear Drop systems. Ridg-U-Tier II provides an enhanced, rigid, patented automatic lock for improved safety.

Columns Sizes: 3x1-5/8, 3x2-1/4, 3x3 and 4x3-inch

Beam Sizes: 2-1/2 thru 6-1/2 inch step beams

Connection Style: Tear Drop and Pin with automatic lock

Features:

- Offset anchor holes
- Two-inch vertical adjustability
- Large base plate
- 6 bend column
- 100% welded uprights
- Large base plates



Slotted or Bolted

These systems use hot-rolled structural steel channels for uprights and beams. Beam-to-column bolted systems provide a strong and rigid structure that is adjustable on 2-inch increments. Beam-to-column slotted connections provide an "easy-to-install and reconfigure" system that is adjustable in 4-inch increments.

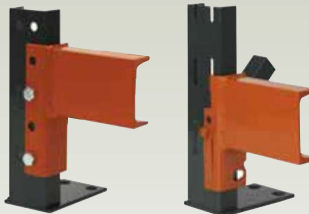
Columns Sizes: 3-inch & 4-inch channels

Beam Sizes: 3-inch and greater

Connection Style: Bolted or slotted connections

Features:

- Various sizes and capacities
- Slotted is NSF-approved
- Large base plates
- Hybrid structural/roll-formed systems are available



Bolted Connection
Vertically adjustable on 2" centers

Slotted Connection
Vertically adjustable on 4" centers

Applications & Options:

- 100% Selective
- Industrial, retail and general warehousing
- Many accessories available
- Economical installation
- Universal application
- Easily reconfigured
- Versatile for inventory changes
- Immediate access to every pallet load



Ridg-U-Rail 2000 or Space Saver Rails

Drive-In and Drive-Thru systems store product on continuous rails that

allow lift trucks to enter the rack structure to place and retrieve pallets. Fewer aisles are required, thus increasing storage density. These "last-in, first-out" storage systems are ideal for warehousing similar products on like-sized pallets.



The **Ridg-U-Rail 2000** is a roll-formed rail offering unparalleled strength and rigidity.



The **Space Saver Rail** saves vertical space when height is critical.

Features & Benefits:

- Fewer aisles
- Increased storage space
- Depth of system virtually unlimited

Applications:

- High volume SKU storage
- Freezer/Cooler storage
- Storage of common-sized pallets



Cart-On-Rail System



Push Back systems offer similar storage density as drive-in while improving selectivity and accessibility to a range of SKUs. Product stored in lanes rest on a system of carts-on-rails commonly

available in 2 to 6 pallets deep. From one aisle, pallets are stored by "pushing back" stored pallets and placing the new load on the next cart position. Retrieving a pallet causes each subsequent pallet to move forward into a ready position. This "last-in, first-out" system reduces picking time when a large number of picking faces are required.

Ridg-U-Rak's patented design features large coated wheels with sealed bearings. The linked cart design provides for smoother operation.

Standard Load: up to 3,000 lbs.

Features & Benefits:

- Higher utilization of available pallet positions than most storage systems
- Patented design
- Easy rolling carts with large coated wheels
- Low maintenance sealed bearings
- Linked carts
- Cart anti-lift-out devices
- Low cart stack height

Applications:

- Universal product storage
- Aisle access to each pick face
- Large number of SKUs and pick faces



First In, First Out Pallet Flow

Ideal for supplying pallet loads of common SKUs. Pallet loads are placed at the charge end, then flow down an incline to be picked at the opposite end. Gravity flow racks are an economical first-in first-out storage solution. When pallets other than GMA pallets are used, Ridg-U-Rak conducts pallet tests using the client's actual pallet to ensure the flow system functions properly.

Standard Load: 3,000 lbs

Features & Benefits:

- Deeper systems
- Multiple roller options
- Available entry guides
- First in - first out per lane

Applications:

- Commonly used in pick modules and staging areas
- Large volume per SKU
- High throughput